

UCM RESEARCH FESTIVAL

Sarah Hickey MWT

Peat Survey & Restoration and Seagrass
Conservation



Peat Survey and Restoration

- What is peatland?
 - Blanket bog
 - Lowland peat
- Surveying the depth of peat
- How does it become degraded?
- Surveying the condition of peat
- Restoring peatland
- Benefits of restoration



Blanket Bog

Sphagnum moss

Hummocks

Waterlogged

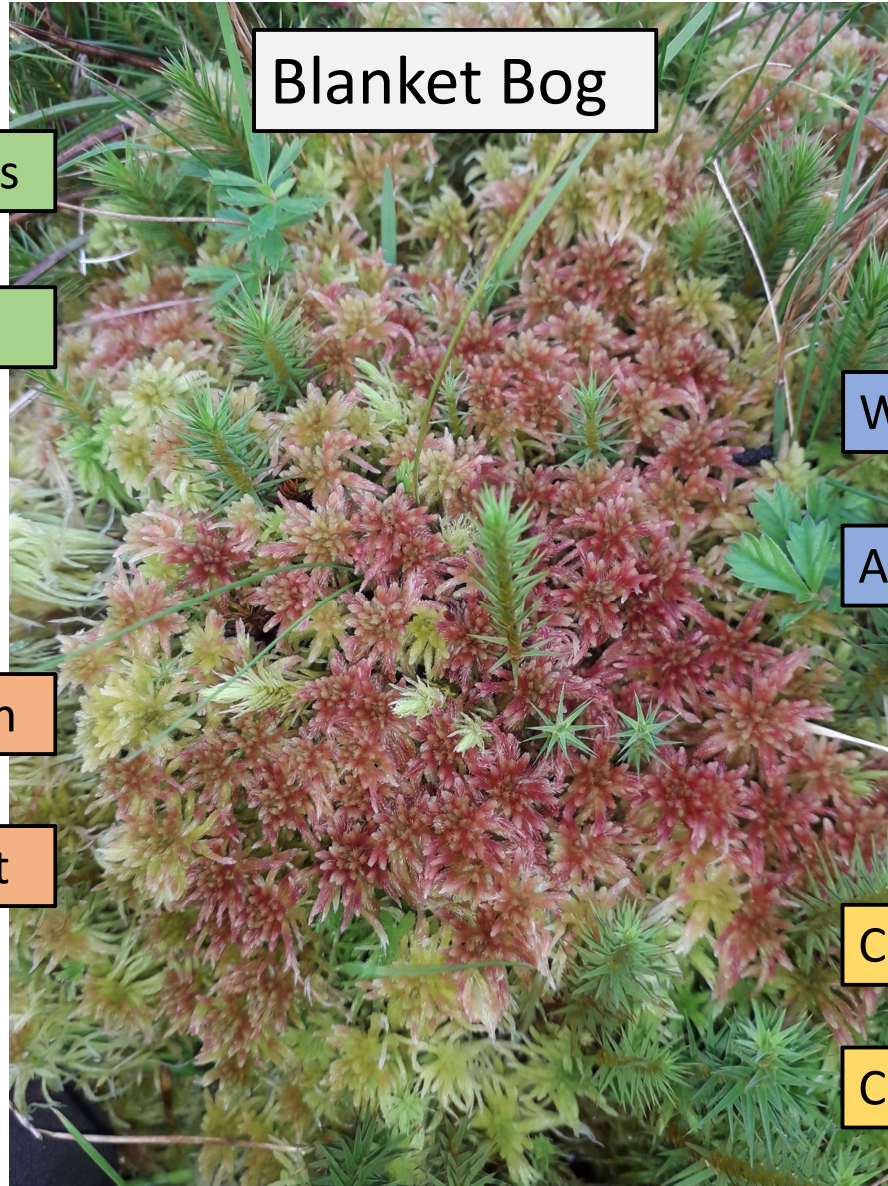
Acidic

Partial decomposition

Peat

Carbon sequestration

Carbon storage



Lowland peat

Waterlogged conditions

Often very deep

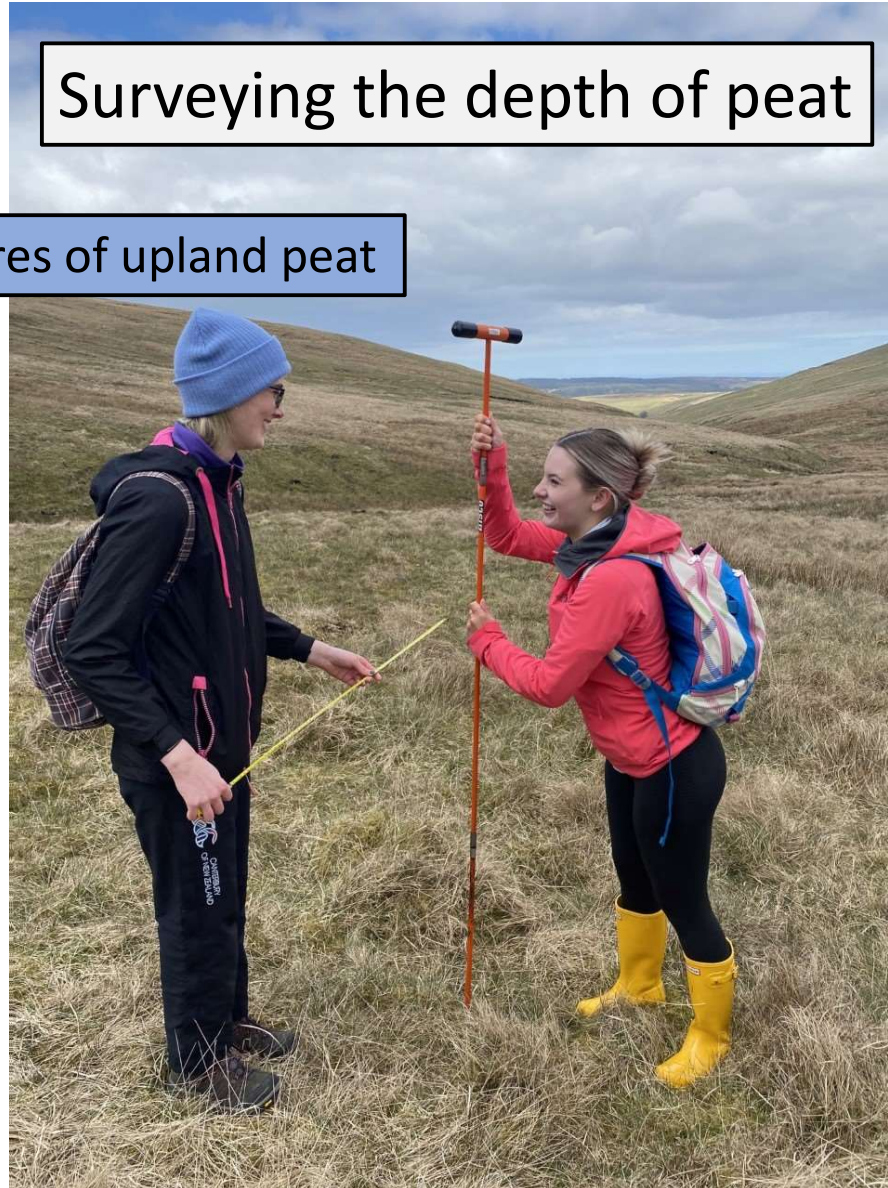
Sphagnum not always present



Surveying the depth of peat

Surveying 10,000 hectares of upland peat

Recording depth





Identifying areas of lowland peat

Measuring the depth

Land management decisions

Climate Change Act 2021

Peatland register

Protection of peat



How does peat become degraded?

Drainage

Peat cutting (turbary)

Overgrazing

Recreation

Peat hags

Erosion gullies

Loss of peat-forming habitat



Peat slide

Hazard

Erosion

Loss of stored carbon

Drying of surrounding peat



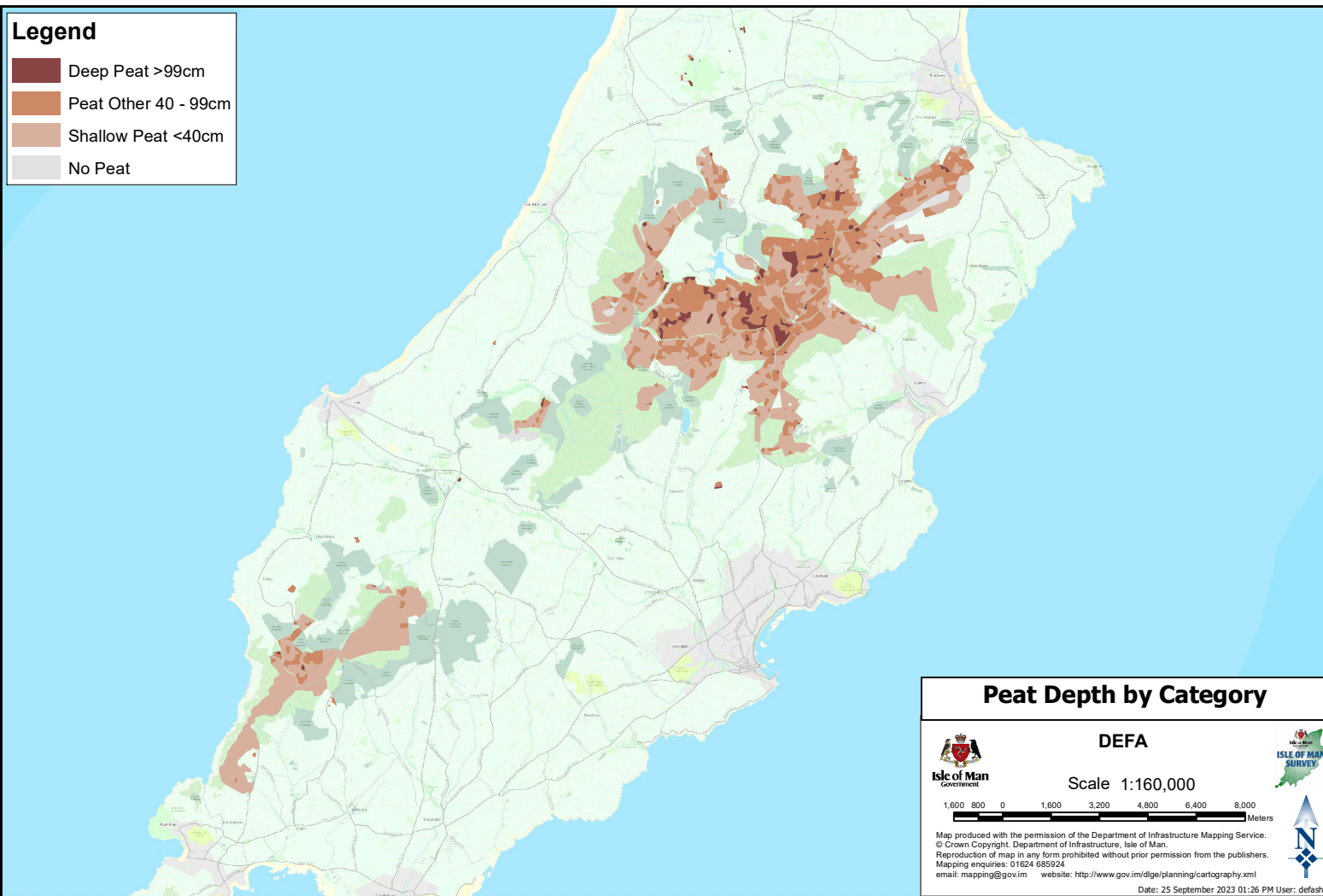


Peat pipe

Underground erosion

Collapse

Drainage of peatland



Surveying the condition of peatland

Erosion features

Habitat condition

Depth



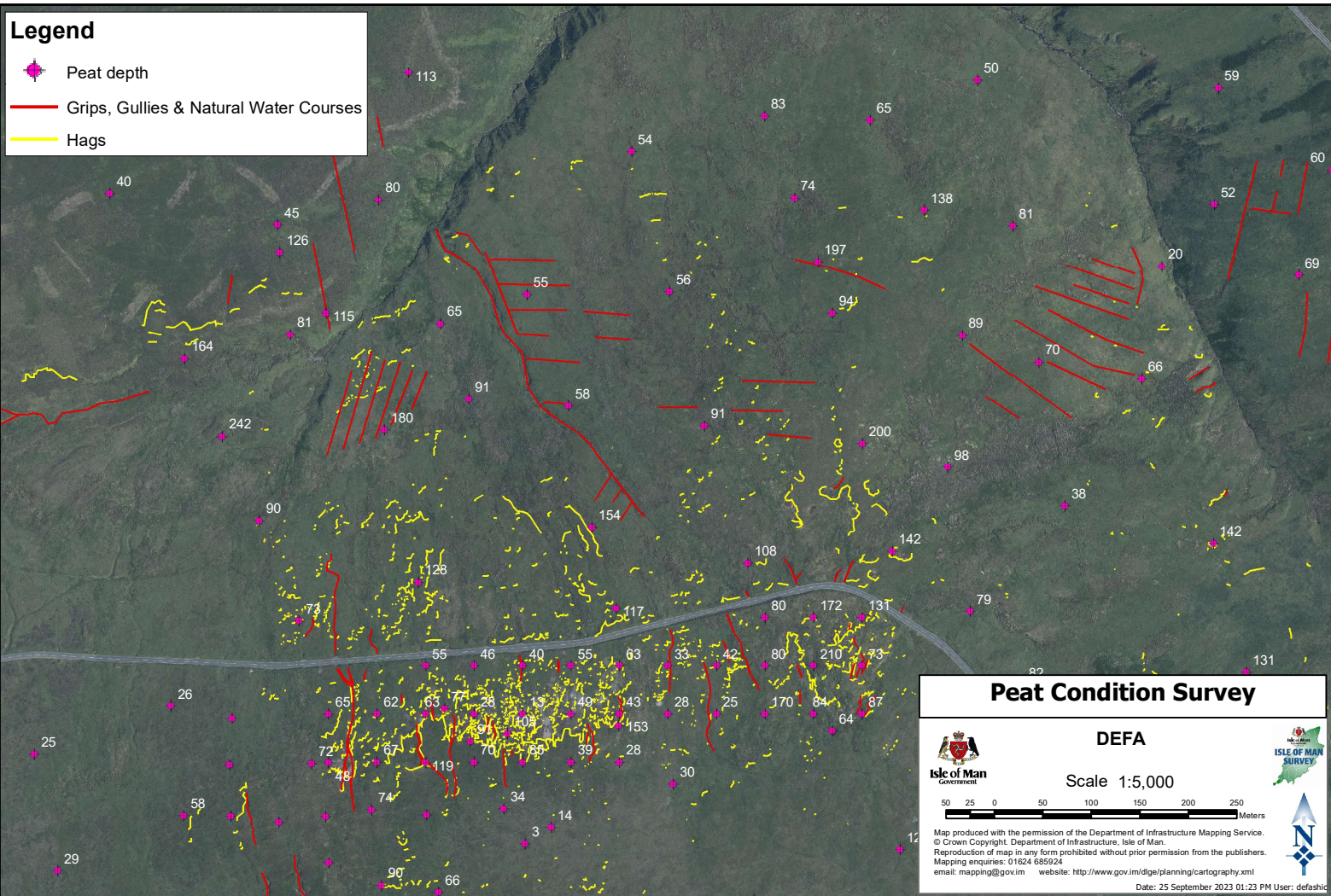
Peatland Survey app

Restoration plans



Habitat condition assessment







Restoring peatland

Trial of restoration methods

Re-profiling hags



Slowing the flow using coir logs

Trapping sediment



Use of heather bales as an alternative



©Moors for the Future



©Yorkshire Peat Partnership

Covering bare peat with heather brash

Planting Sphagnum moss

Cover with coir netting





Trial restoration site

Beinn-y-Phott turbary





Benefits of restoration

